



*Excellence*  
**2014**



Advanced sound systems since 1972



Advanced sound systems since 1972

# Xcellence

*A new benchmark in loudspeaker design*

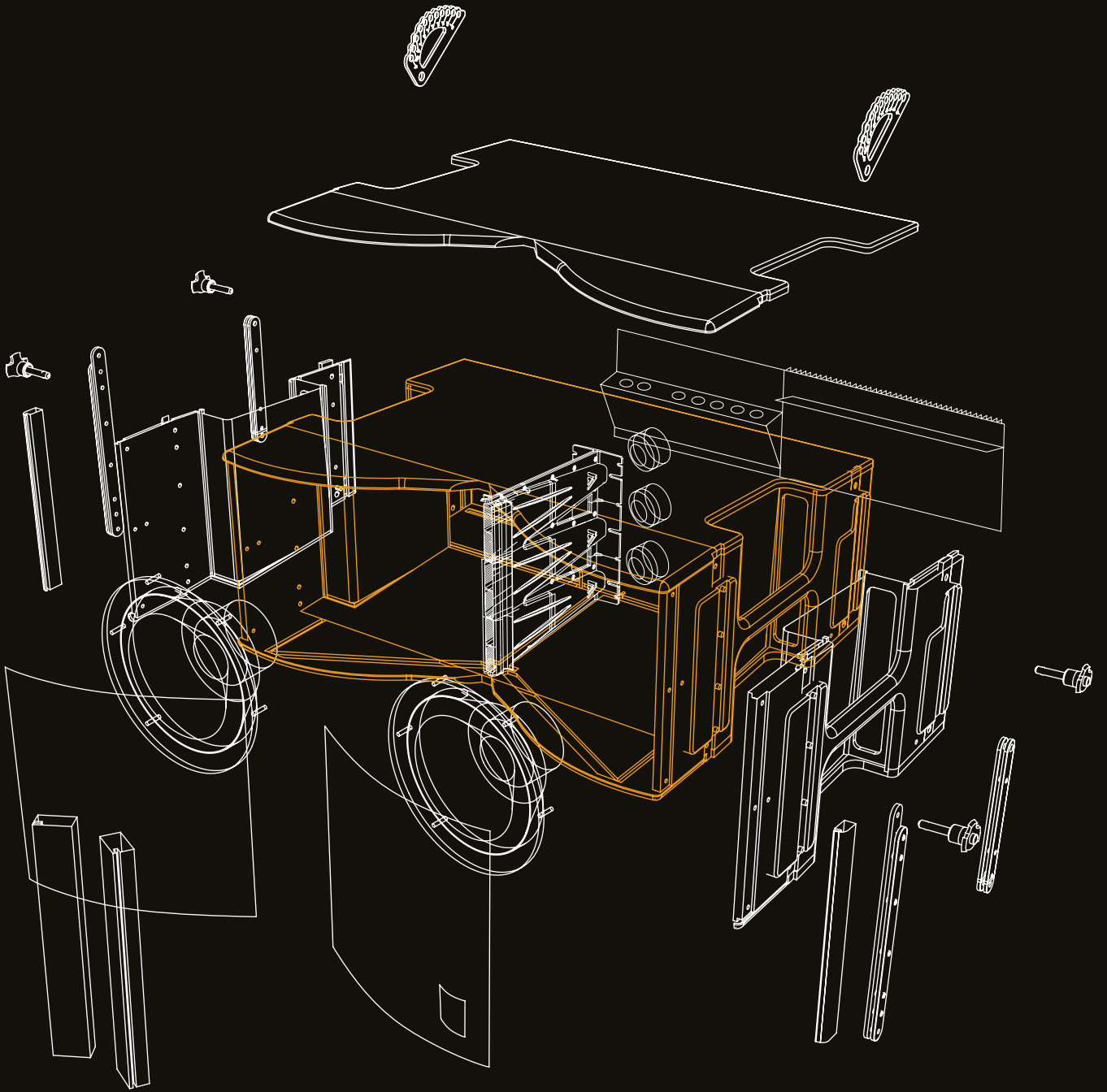
Xcellence is the response of Master Audio to the challenge of creating high-end products, a compromise to deliver our best and share with you our passion, the search for the best sound.

Xcellence means combining the latest available technologies, an extreme care for the finest details and a user friendly design, in order to create a product that meets the most demanding markets and applications with *X*cellent performance.

---

Xcellence es la respuesta de Master Audio al desafío de crear productos de una calidad superior. Asimismo es nuestro compromiso ofrecer lo mejor y poder compartir nuestra pasión, la búsqueda del mejor sonido.

Xcellence significa la combinación de las últimas tecnologías disponibles, una atención extrema a los detalles más finos y un diseño fácil de usar, con el fin de crear un producto que cumpla con los requerimientos del mercado y las aplicaciones más exigentes.



**BUILT FOR THE MOST DEMANDING APPLICATIONS**  
CONSTRUIDO PARA LAS APLICACIONES MÁS EXIGENTES

*Xcellence* series' compact design, combined with its high output, makes it extremely versatile. It is ideal for both rental companies and fixed installations where high performance and outstanding quality are required. Theatres, churches, concert halls and a whole host of other venues will find *Xcellence* to be the perfect loudspeaker system.

La combinación entre el diseño compacto y la gran potencia de los sistemas *Xcellence*, los hace muy versátiles: son ideales tanto para empresas de alquiler como para instalaciones fijas, donde se requiere un gran rendimiento y una calidad sobresaliente. Teatros, iglesias, salas de conciertos y toda una amplia gama de lugares encontrarán en *Xcellence* el perfecto sistema de sonido.

**COMPLETE CONTROL IN YOUR HANDS**  
TODO EL CONTROL EN TUS MANOS

The very latest technologies, in terms of both acoustic design and digital electronics, are incorporated into the *Xcellence* series. This affords the loudspeakers their extreme capabilities, while also facilitating quick and intuitive set up. Just plug and play, and let your ears fall in love with its incredible sound.

Los sistemas *Xcellence* incorporan la última tecnología tanto en acústica como en electrónica digital. Esto dota de unas capacidades sorprendentes a los altavoces, a la vez que facilita una rápida e intuitiva configuración. Conecta, disfruta y deja que tus oídos se enamoren.

# DESIGN & ENGINEERING



## DISEÑO E INGENIERÍA

**DESIGN IN EVERY DETAIL**  
CALIDAD HASTA EL ÚLTIMO DETALLE

We have invested in, and applied, the very best knowledge, materials and technology to deliver the ultimate product. Features such as the precision-made, ergonomic handles and metallic finish stainless steel grilles speak for themselves. Not only do they contribute to an extraordinary look, they also allow for comfortable handling or protection against moisture, rain and dust.

Hemos aplicado los mejores conocimientos, materiales y tecnología para ofrecer un producto novedoso, moderno y de aspecto estupendo. Sus asas ergonómicas permiten un cómodo manejo, y su rejilla de metal cubierta de tela protege de la humedad, la lluvia y el polvo.

**RESILIENCE AND GREAT LOOKS**  
DURABILIDAD CON UN ASPECTO IMPRESIONANTE

*Xcellence* cabinets are coated in an extremely high-resistance, bi-component polyurea material, to protect against scratches and abrasions during the roughest touring conditions. The treatment bonds hermetically to wood surfaces, following every angle and curve, for a stunning finish and a watertight seal. Just lasting beauty!

Los recintos *Xcellence* están recubiertos de un material bicomponente de poliurea ultraresistente que protege contra abrasión y arañazos en las duras condiciones de touring. El tratamiento se adapta perfectamente a las superficies de madera, siguiendo cada uno de los ángulos y curvas, para un acabado totalmente hermético. ¡Sólo belleza duradera!

## PREMIUM CUSTOMISED COMPONENTS COMPONENTES PERSONALIZADOS DE CALIDAD

Each sound system claims to have a personality. For that reason the **Xcellence** series has been accurately designed including customised components to optimize the acoustic properties of each speaker's cabinet. Speakers, control circuits, interaction interface, horns, waveguides, allow us to adjust and take full advantage of the combination of elements all over Master Audio philosophy, advanced sound systems.

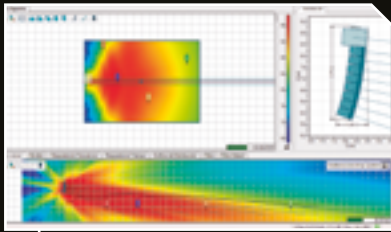
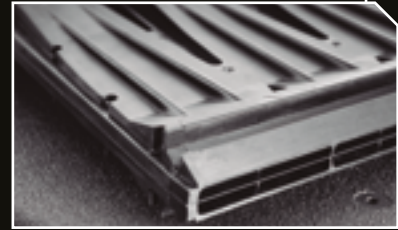
Cada sistema de sonido exige su propia personalidad. Por esta razón, los sistemas **Xcellence** han sido diseñados cuidadosamente incluyendo componentes totalmente personalizados para optimizar las propiedades acústicas de cada uno de los recintos. Altavoces, circuitos de control, interfaz interactiva, bocinas, guía de ondas... La combinación de estos elementos permite un ajuste perfecto, todo bajo la filosofía Master Audio, sistemas de sonido avanzados.

## EXCLUSIVE WAVEGUIDE: GREATER PERFORMANCE EXCLUSIVA GUÍA DE ONDAS: EL MÁS ALTO RENDIMIENTO

Master Audio's engineering team have succeeded in achieving a very long throw while maintaining amplitude. The isophasic waveguide assembly loaded with multiple Neodymium drivers, featuring polypropylene naphthalene (PEN) diaphragms, has been designed exclusively for these models. The result is a side lobe-free vertical dispersion and crystal clear response at high frequencies. Its performance in this respect simply could not be improved upon.

Los sistemas line array **Xcellence** incorporan una guía de ondas isofásica específicamente diseñada por el equipo de ingeniería de Master Audio. Con ella, se ha conseguido una respuesta a larga distancia sin pérdida de amplitud. Y junto a los drivers y los diafragmas de polipropileno naftaleno (PEN) se consigue una dispersión vertical libre de lóbulos laterales y una respuesta cristalina a altas frecuencias. Su rendimiento, en este sentido, simplemente no se puede mejorar.

# ACOUSTIC FEATURES



## CARACTERÍSTICAS ACÚSTICAS

### ACOUSTICAL PREDICTION FOR BETTER INSTALLATIONS PREDICCIÓN ACÚSTICA PARA LAS MEJORES INSTALACIONES

Free EASE and EASE FOCUS 2 libraries allow you to predict the performance of a specific **Xcellence** system in any given space, prior to installation. Powerful EASE software calculates 3D coverage maps, speech intelligibility, reverberation times and other acoustical parameters – even before the room itself is built. Plan correctly and you will succeed!

Las librerías EASE y EASE FOCUS 2 permiten pronosticar el rendimiento de un sistema específico **Xcellence**, previo a su instalación. El potente software EASE calcula mapas de cobertura en 3D, la inteligibilidad del habla, los tiempos de reverberación y otros parámetros acústicos incluso antes de que el espacio en sí haya sido construido. ¡Planifica correctamente y triunfa!

### PRECISE ACOUSTIC DESIGN DISEÑO ACÚSTICO PRECISO

High-end speaker systems require an accurate acoustic design of the cabinet. Our engineering team uses complex and powerful physical and electroacoustical calculation software to achieve the necessary results in every detail. The cabinet and its components: transducers, drivers, waveguides, protective grill... everything must perform as a unique element.

Un sistema de altavoces de alta gama requiere un depurado diseño acústico del recinto que lo albergará. Nuestros ingenieros utilizan complejos y potentes softwares de cálculo físico y electroacústico para obtener el resultado necesario en todos los detalles. El recinto y sus componentes: transductores, motores, guías de ondas, rejillas de protección... deben conformar una única célula sonora.

## ETHERNET CONNECTION AND FULL WIRELESS CONTROL CONEXIÓN ETHERNET Y CONTROL REMOTO TOTAL

Imagine having full control and monitoring your PA system from any spot in the room. Well, imagine no more: every **Xcellence** system can be remotely controlled and monitored via Ethernet. The bespoke control protocol also supports Wi-Fi connection, using wireless access points. Each **Xcellence** system has a built-in two-port switch for simplified wiring.

Imagina tener todo el control y monitorización de tus sistemas PA desde cualquier punto. Deja de imaginar, los sistemas **Xcellence** se pueden controlar vía Ethernet a través del software de control DSP Studio®, utilizando puntos de acceso Wi-Fi. Cada sistema **Xcellence** incorpora dos puertos para facilitar un cableado simple.



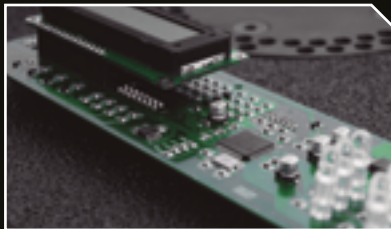
## DSP STUDIO® CONTROL SOFTWARE SOFTWARE DE CONTROL DSP STUDIO®

Adjust even the finest details with Master Audio's DSP Studio® control software. Parameters such as gain (per way), limiter, polarity, delay and 5 custom parametric EQs can all be managed via software.

Several elements may be controlled at the same time using grouping functions. The software also gives comprehensive information about the amplifier status: input and output levels, heat-sink temperature, clip and protection indications. DSP Studio® is available for PC and iPad.

Ajusta hasta el más mínimo detalle con el software de control DSP Studio® de Master Audio. Se pueden gestionar parámetros como ganancia (por vía), limitador, polaridad y delay, además de 5 ecualizadores paramétricos personalizados, caja a caja o agrupándolas. El software también proporciona información sobre el estado del amplificador: niveles de entrada y salida, temperatura del disipador de calor e indicaciones de clip y protección. DSP Studio® está disponible para PC e iPad.

# ELECTRONIC FEATURES



# CARACTERÍSTICAS ELECTRÓNICAS

## DIGITAL PROCESSING AND AMPLIFICATION PROCESAMIENTO Y AMPLIFICACIÓN DIGITAL

All **Xcellence** systems feature cutting-edge digital electronics, including high performance AD/DA converters. DSP with powerful processing capabilities and 48-bit/96 kHz internal architecture provide precision crossover filters, parametric EQ, limiters, and additional advanced processing features. The DSP is perfectly matched with a third-generation Class-D amplifier, ensuring a full control of the power delivered to the loudspeakers at all times. Two-way models are bi-amplified.

Todos los sistemas **Xcellence** están provistos de una moderna electrónica digital, incluyendo convertidores AD/DA de alto rendimiento. Un DSP con poderosas capacidades de procesamiento, con una arquitectura interna de 48 bits/96 kHz, que proporciona crossovers de precisión, ecualizador paramétrico y limitador, además de otros procesados. El DSP está en perfecta sintonía con el amplificador Clase D de tercera generación, asegurando en todo momento un control total de la potencia entregada a los altavoces. Los modelos de dos vías son biamplificados.

## NO WORRIES WITH MASTER AUDIO'S EXCLUSIVE OVERVOLTAGE PROTECTION NO MÁS PREOCUPACIONES CON LA EXCLUSIVA PROTECCIÓN POR SOBREVOLTAJE

Our unique, innovative over-voltage protection circuit continuously monitors line voltage and instantly disconnects **Xcellence** series systems when it detects that line voltage has exceeded the maximum permissible level. The system will restart automatically when mains voltage returns to normal levels. No more worries about over-voltage destruction – just enjoy the beat.

Nuestro único e innovador sistema de protección del circuito por sobrevoltaje, monitoriza continuamente la tensión de la red eléctrica y desconecta los sistemas **Xcellence** cuando detecta que ha superado el nivel máximo permitido. El sistema se reinicia automáticamente cuando el nivel se restablece. No más preocupaciones por los daños causados por sobrevoltaje.

¡Simplemente disfruta el ritmo!

---

*Compact, powerful and versatile: the perfect balance is a reality.*

The demanding business of high-end professional audio increasingly relies upon the optimum combination of high performance, condensed size and low weight: in transport they must be effortless, on arrival they must sound pristine.

Xcellence Point Source Systems are designed with these prerequisites in mind, and the result is an outstanding level of performance in the smallest possible format. This affords the series a very broad versatility, making it equally practical onstage as a monitor or out front as a main PA. In either application, it delivers astonishing sound quality.

Multiple built-in presets allow for setup in seconds, with the perfect model for each application: flat, near-field, speech reproduction and many more.

*Small details are vital – they all add up to create exceptional products...*

---

# POINT SOURCE

---

*Compactos, potentes y versátiles: el equilibrio perfecto hecho realidad.*

El exigente mundo del audio profesional de alta gama valora cada vez más la combinación óptima entre rendimiento y tamaño con un reducido peso: esfuerzo mínimo en su transporte y máxima calidad de sonido.

Los sistemas Xcellence Point Source han sido diseñados bajo estas premisas. El resultado es un nivel de rendimiento sobresaliente en el formato más pequeño posible. Esto aporta a la serie una versatilidad amplísima, permitiendo que sea igualmente funcional como monitor de escenario o como sistema PA principal.

Los múltiples presets incorporados permiten configurar, en cuestión de segundos, el sonido perfecto para cada aplicación: flat, near-field, speech...

*Los pequeños detalles son fundamentales. Juntos convergen en productos excepcionales...*

---







# X12CE

Small format but impeccable sound! There is no better combination of performance, power, weight and size. Weighing only 22.3 kg, X12CE is the most versatile and dynamic system on the market. X12CE can handle the most demanding stage monitor and PA applications with excellent results.

¡Sonido impecable en un pequeño formato! No existe mejor combinación de rendimiento, potencia, peso y tamaño. Con tan sólo 22,3 kg, la X12CE es el sistema más dinámico y versátil del mercado. X12CE responde a las más exigentes aplicaciones como monitor de escenario o PA con resultados excelentes.

# X12CE

## POINT SOURCE 12" COAXIAL ACTIVE SPEAKER SYSTEM



COAXIAL  
SPEAKER



> 250 V  
Overvoltage  
Protection



WITH CWK-D

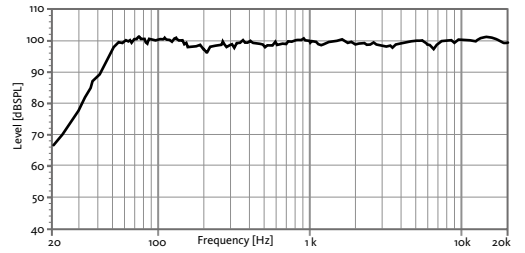


DSP STUDIO CONTROL APP  
FOR IPAD & WINDOWS

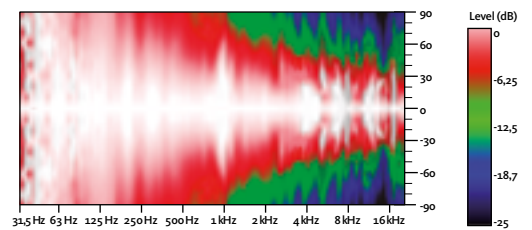
### TECHNICAL FEATURES

Amplifier (program power)	800 W (LF) + 200 W (HF) – Class D Bi-amplified
Input sensitivity	8 dBu – 1.94 V
Input Impedance	20 kΩ Balanced
Mains	Universal Switch Mode Power Supply 85-265 V / 45-65 Hz
Average current draw	1.3 A (Heavy duty musical program)
SPL (1 m)	127 dB continuous, 130 dB peak
Built-in DSP	48 bit
AD/DA converters	24 bit – 96 kHz
Presets	FACTORY / NEARFIELD / SPEECH / MONITOR / XOVER + 23 configurable user memories
Frequency response (-10 dB)	48 Hz – 20 kHz
Components	Coaxial transducer LF 12" Neodymium woofer (3" voice coil) HF 3" Titanium diaphragm Neodymium driver
Directivity (HxV)	80° Conical
Weight	22.3 kg
Finish	Multilayer Baltic birch plywood Front steel grille with grey micro-foam cloth High resistant black matt Polyurea paint

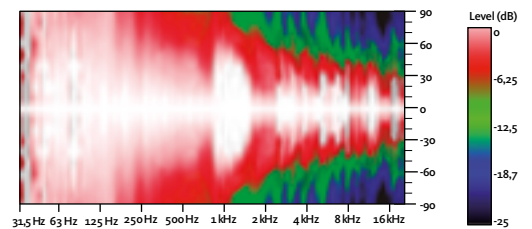
### FREQUENCY RESPONSE 1w/1m (FACTORY PRESET)



### HORIZONTAL COVERAGE, 0°



### VERTICAL COVERAGE, 0°



STAGE MONITOR APPLICATION



REAR VIEW

### ACCESSORIES



FC-X12CE



UB-X12



GT-50



SC-15X



ACR-M10



SP/CR



CWK-D



## X 15CE

**Just the beautiful sound and versatility of the X12CE, also in a compact format, but with deeper low end. From 44 Hz to 20 kHz, you will hear low frequencies tuned to perfection. A little more of low-end for a chunkier sound!**

La misma calidad sonora y versatilidad de la X12CE, también en un formato compacto, pero con graves más intensos. Desde 44 Hz a 20 kHz, oirás las bajas frecuencias sintonizadas hasta la perfección. ¡Un poco más de graves para un sonido más robusto!

# X15CE

## POINT SOURCE 15" COAXIAL ACTIVE SPEAKER SYSTEM

*Xcellence*



COAXIAL  
SPEAKER



> 250 V  
Overvoltage  
Protection



WITH CWK-D

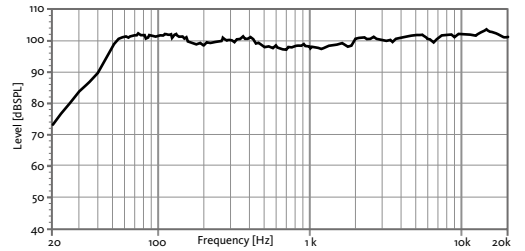


DSP STUDIO CONTROL APP  
FOR IPAD & WINDOWS

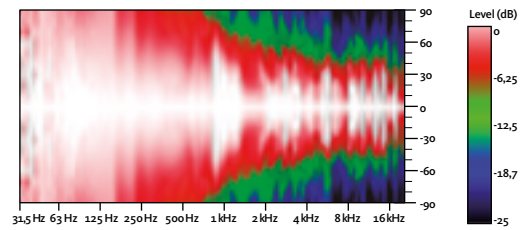
### TECHNICAL FEATURES

Amplifier (program power)	800 W (LF) + 200 W (HF) – Class D Bi-amplified
Input sensitivity	8 dBu – 1.94 V
Input Impedance	20 kΩ Balanced
Mains	Universal Switch Mode Power Supply 85-265 V / 45-65 Hz
Average current draw	1.3 A (Heavy duty musical program)
SPL (1 m)	127 dB continuous, 130 dB peak
Built-in DSP	48 bit
AD/DA converters	24 bit – 96 kHz
Presets	FACTORY / NEARFIELD / SPEECH / MONITOR / XOVER + 23 configurable user memories
Frequency response (-10 dB)	44 Hz – 20 kHz
Components	Coaxial transducer LF 15" Neodymium woofer (3" voice coil) HF 3" Titanium diaphragm Neodymium driver
Directivity (HxV)	80° Conical
Weight	25.9 kg
Finish	Multilayer Baltic birch plywood Front steel grille with grey micro-foam cloth High resistant black matt Polyurea paint

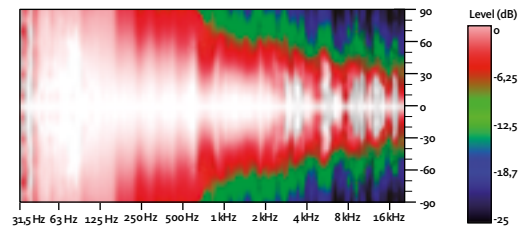
### FREQUENCY RESPONSE 1w/1m (FACTORY PRESET)



### HORIZONTAL COVERAGE, 0°



### VERTICAL COVERAGE, 0°



STAGE MONITOR APPLICATION



REAR VIEW



### ACCESSORIES



FC-X15CE



UB-X15



GT-50



SC-15X



ACR-M10



SP/CR



CWK-D



# X15LTE

**Ultimate performance from a traditional two-way system.**

**X15LTE combines a 15-inch woofer with a Neodymium driver mounted on a proprietary horn design. It achieves long throw and high power levels, with a quality normally found in larger systems.**

Sistema tradicional de dos vías llevado a la máxima expresión.

La combinación de un woofer de 15" y un motor de neodimio acoplado a una bocina de diseño propio, consigue unos niveles de potencia y calidad a largo alcance reservados a sistemas de mayores dimensiones.

# X 15LTE

## POINT SOURCE 15" 2-WAY SPEAKER SYSTEM

*Xcellence*



LONG  
THROW



> 250 V  
Overvoltage  
Protection



WITH CWK-D



DSP STUDIO CONTROL APP  
FOR IPAD & WINDOWS

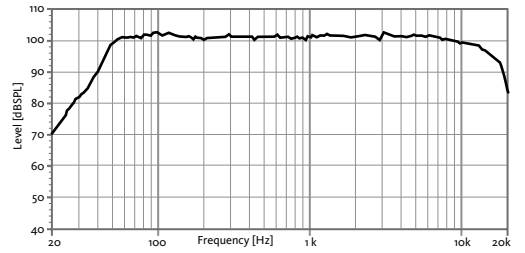
**TECHNICAL FEATURES**

**X15LTE (ACTIVE)**

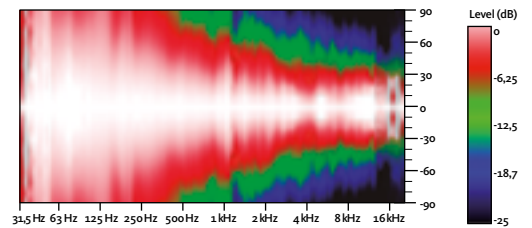
**X15LTP (PASSIVE)**

Amplifier (program power)	1000 W (LF) + 200 W (HF) Class D Bi-amplified	
Power (musical program)	2000 W	
Input sensitivity	8 dBu – 1.94 V	99 dB (1 W / 1 m)
Input Impedance	20 kΩ Balanced	
Nominal Impedance	4 Ω	
Mains	Universal Switch Mode Power Supply 85-265 V / 45-65 Hz	
Average current draw	1.3 A (Heavy duty musical program)	
SPL (1 m)	131 dB continuous, 134 dB peak	
Built-in DSP	48 bit	
AD/DA converters	24 bit – 96 kHz	
Presets	FACTORY / NEARFIELD / LOUDNESS / SPEECH / XOVER + 23 configurable user memories	
Frequency response (-10 dB)	42 Hz – 19 kHz	42 Hz – 19 kHz *
Components	LF	15" Neodymium woofer (3" voice coil)
	HF	3" Titanium diaphragm Neodymium driver
Directivity (HxV)	60° x 50° (rotatable horn)	
Weight	37.9 kg	34.9 kg
Finish	Multilayer Baltic birch plywood Front steel grille with grey micro-foam cloth High resistant black matt Polyurea paint	

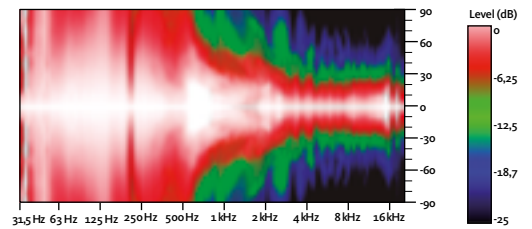
**FREQUENCY RESPONSE 1w/1m (FACTORY PRESET)**



**HORIZONTAL COVERAGE, 0°**



**VERTICAL COVERAGE, 0°**



\* With external Master Audio DSP & HD3200 Amplifier



**ACCESSORIES**



FC-X15LTE



HR-1215



GT-50HR



SC-15X



ACR-M10



SP/CR



CWK-D

---

*Perfect lows for the biggest sound!*

To get the best sound, it's essential to treat every part of the audio frequency spectrum with equal respect. To do this requires exhaustive study, always trying to improve and applying the latest knowledge in every single product.

Depending on the application, full-range Point Source systems often need extra reinforcement for low frequencies. Xcellence subwoofers are optimised to complement them. Each of the three models – 18-inch, double 15-inch and double 18-inch – are suitable for gruelling tours or demanding installations.

Xcellence series subwoofers incorporate presets to optimise their performance in various applications. These include a cardioid preset, which can dramatically improve onstage acoustics.

*Xcellence subwoofers: for breathtaking low end!*

---

# SUBWOOFERS

---

*¡Graves perfectos para un sonido más grande!*

Para obtener el mejor sonido es esencial tratar cada parte del espectro sonoro con el mismo respeto. Para ello se requiere un estudio exhaustivo. Master Audio no escatima en horas de investigación, siempre intentando mejorar y aplicar los últimos conocimientos en cada uno de sus productos.

Según la aplicación, los sistemas full-range Point Source requieren un refuerzo a bajas frecuencias. Los subwoofers Xcellence están optimizados para complementarlos. Existen tres modelos: un 18", un doble 15" y un doble 18", todos ellos aptos para giras agotadoras o instalaciones exigentes.

Cada uno de nuestros subwoofers dispone de sus propios presets para optimizar su rendimiento en cada aplicación. Además, todos ellos comparten un preset cardioide que mejora considerablemente la experiencia acústica sobre el escenario.

*¡Subwoofers Xcellence: graves que te dejarán sin aliento!*

---







# X18WE

**Versatility and a surprising punch in a compact size: the X18WE was developed to offer the very best bass experience with the smallest size possible. This is the best option to be flown with the X208 line array. It also marries perfectly with the Xcellence Point Source systems for bass reinforcement.**

Versatilidad y un sorprendente punch en un formato compacto: el X18WE fue desarrollado para ofrecer los mejores graves en el formato más reducido posible. Es la mejor opción para ser volado con el X208. Asimismo, es la compañía perfecta para los sistemas Xcellence Point Source como refuerzo a bajas frecuencias.

# KR18WE

2400 W  
18" ACTIVE  
SUBWOOFER

*Xcellence*



CARDIOID  
PRESET



> 250 V  
Overvoltage  
Protection



WITH CWK-D

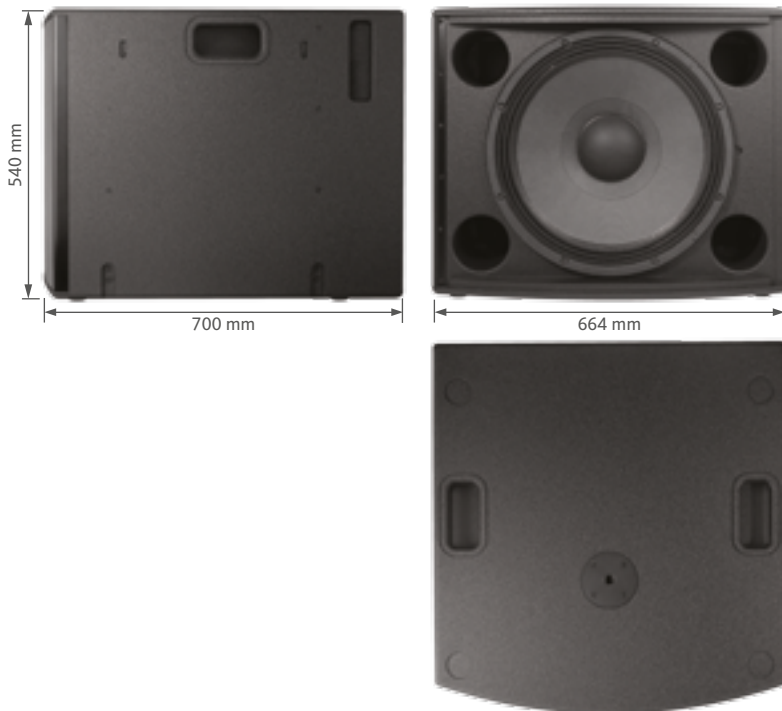


DSP STUDIO CONTROL APP  
FOR IPAD & WINDOWS

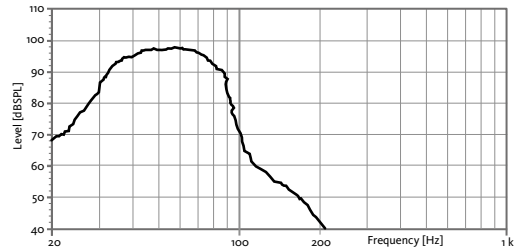
## TECHNICAL FEATURES

Amplifier (program power)	2400 W – Class D
Input sensitivity	2 dBu – 1 V
Input Impedance	20 kΩ Balanced
Mains	Universal Switch Mode Power Supply 85-265 V / 45-65 Hz
Average current draw	1.9 A (Heavy duty musical program)
SPL (1 m)	133 dB continuous, 136 dB peak
Built-in DSP	48 bit
AD/DA converters	24 bit – 96 kHz
Presets	LPF90+3 / LPF90+6 / LPF110+3 / LPF110+6 / LPF130+3 / LPF130+6 / CARDIOID + 23 configurable user memories
Frequency response (-10 dB)	32 Hz – 140 Hz
Components LF	18" Neodymium woofer (4" voice coil)
Directivity (HxV)*	Omnidirectional
Weight	46.2 kg 49.2 kg (with KR-18WE flying kit)
Finish	Multilayer Baltic birch plywood Front steel grille with grey micro-foam cloth High resistant black matt Polyurea paint

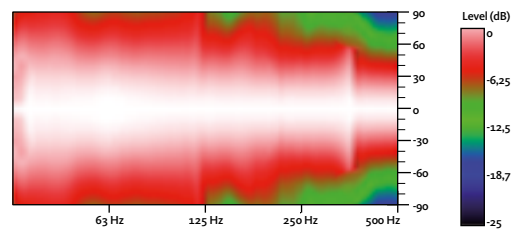
\* Cardioid preset available (3 units minimum)



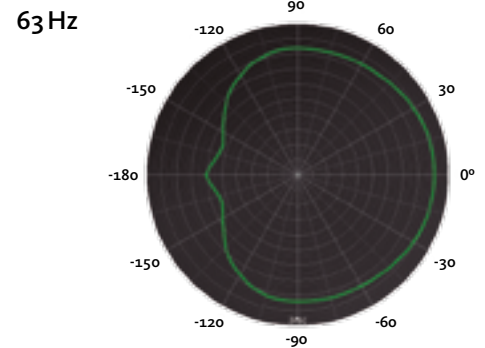
## FREQUENCY RESPONSE 1w/1m (LPF90+3 PRESET)



## HORIZONTAL & VERTICAL COVERAGE, 0°



## EASY CARDIOID CONFIGURATION THROUGH DEDICATED PRESET



REAR VIEW

## ACCESSORIES



FC-X18WE



TA-X208R



FR-X18



KR-18WE



SP/CR



CWK-D



# X215W

**Stunning characteristics, both inside and out. The X215W's Band-Pass design provides a surprisingly powerful low-frequency response, balanced perfectly against its size. With two 15-inch woofers, it is the best bass reinforcement to fly with X210. Simply unbeatable!**

Características impresionantes, tanto dentro como fuera. El diseño Band Pass del X215W ofrece una sorprendente y potente respuesta a bajas frecuencias, equilibrada perfectamente con su tamaño. Gracias a sus dos woofers de 15", es el refuerzo óptimo de graves para el X210. ¡Simplymente inmejorable!

# X215W

2400 W  
2x 15" ACTIVE  
SUBWOOFER

*Xcellence*



CARDIOID  
PRESET



> 250 V  
Overvoltage  
Protection



WITH CWK-D



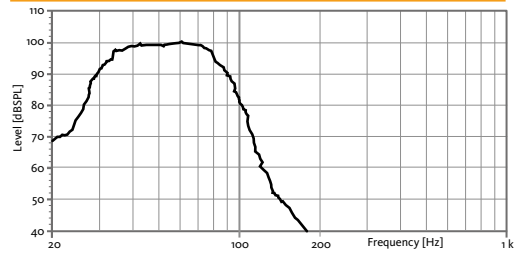
DSP STUDIO CONTROL APP  
FOR IPAD & WINDOWS

## TECHNICAL FEATURES

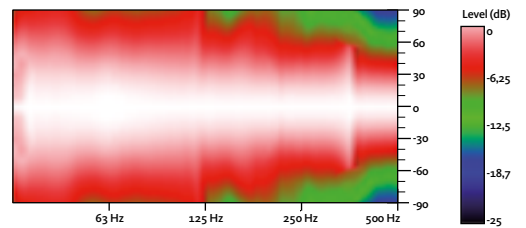
Amplifier (program power)	2400 W – Class D
Input sensitivity	2 dBu – 1 V
Input Impedance	20 kΩ Balanced
Mains	Universal Switch Mode Power Supply 85-265 V / 45-65 Hz
Average current draw	3.5 A (Heavy duty musical program)
SPL (1 m)	135 dB continuous, 138 dB peak
Built-in DSP	48 bit
AD/DA converters	24 bit – 96 kHz
Presets	LPF90+3 / LPF90+6 / LPF100+3 / LPF100+6 / LPF110+3 / LPF110+6 / LPF120+3 / LPF120+6 / CARDIOID + 23 configurable user memories
Frequency response (-10 dB)	32 Hz – 130 Hz
Components LF	2x15" Neodymium woofers (4" voice coil)
Directivity (HxV)*	Omnidirectional
Weight	79 kg
Finish	Multilayer Baltic birch plywood Front steel grille with grey micro-foam cloth High resistant black matt Polyurea paint

\* Cardioid preset available (3 units minimum)

## FREQUENCY RESPONSE 1W/1m (LPF90+3 PRESET)

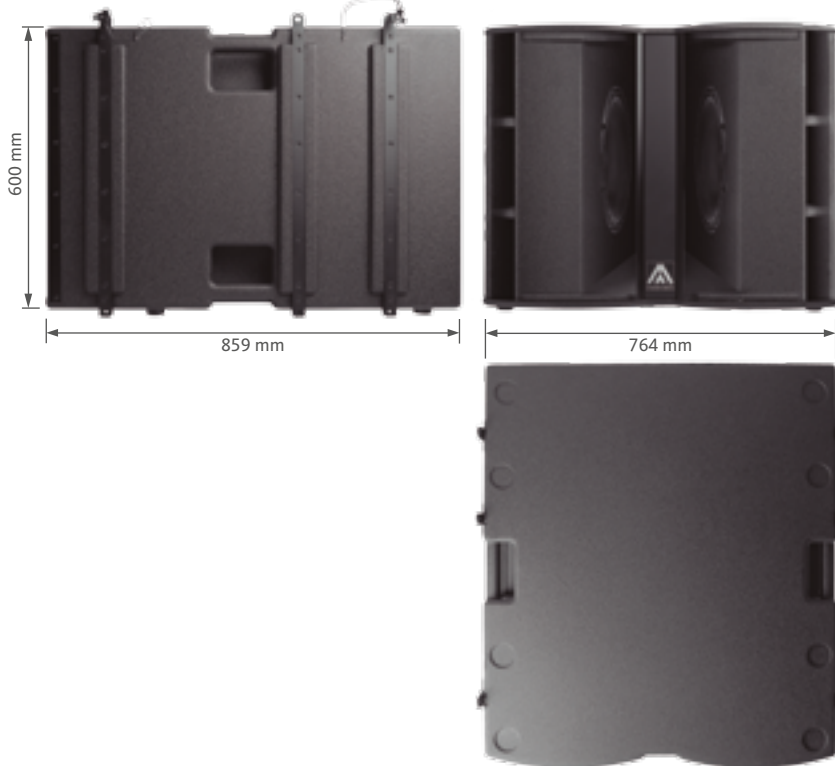
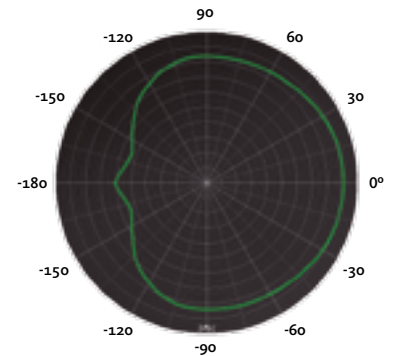


## HORIZONTAL & VERTICAL COVERAGE, 0°



## EASY CARDIOID CONFIGURATION THROUGH DEDICATED PRESET

63 Hz



REAR VIEW

## ACCESSORIES



FC-X215



TA-X210R



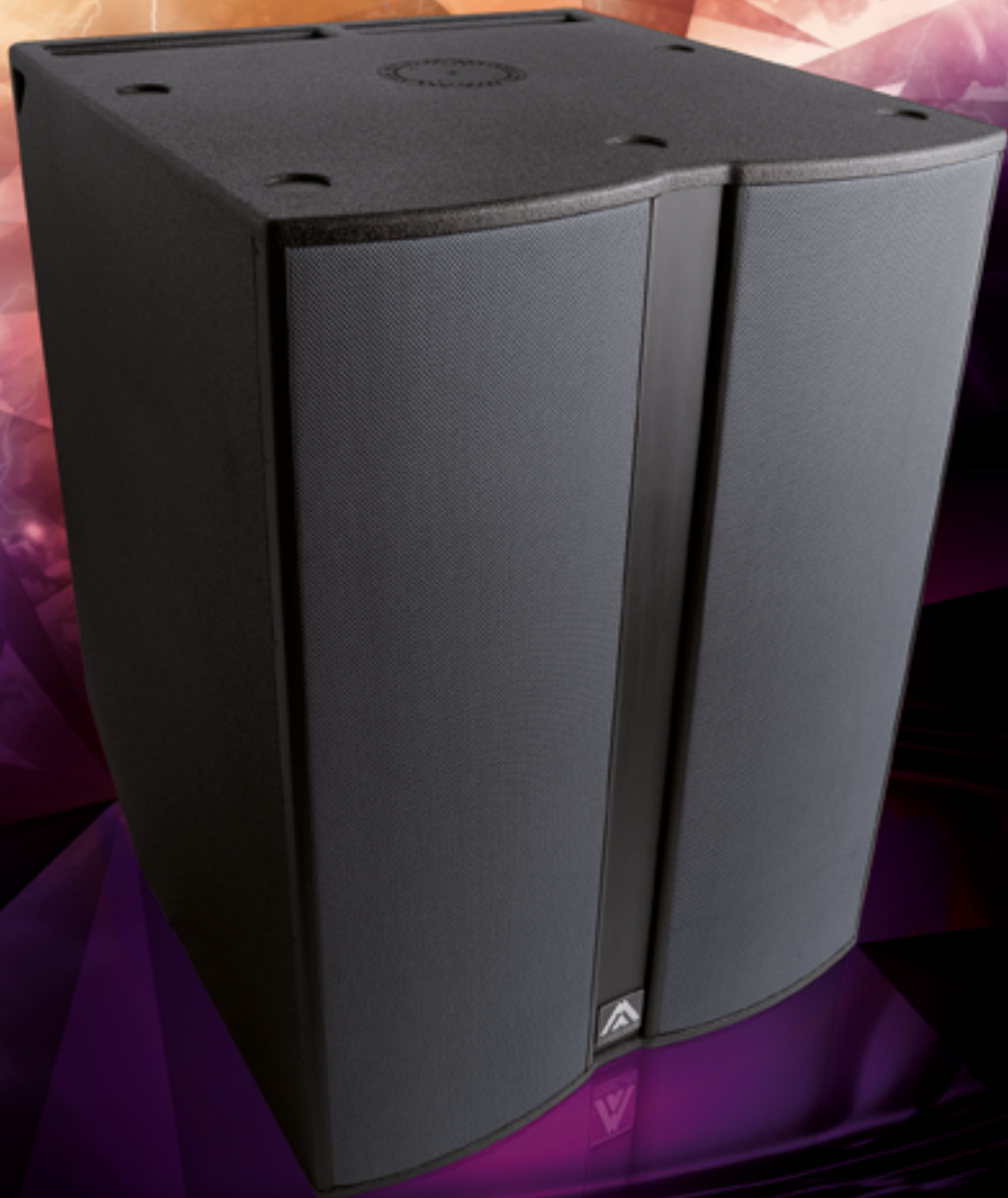
FA-X208/215



ST-X215



CWK-D



# X 218W3K

**The beauty and the beast! The combination of two 18-inch woofers with 4.5-inch long excursion voice coil in a highly reinforced cabinet, with 3000 W amplification, DSP and ergonomic design, makes the X218W3K one of the most advanced, powerful and maneuverable subwoofers on the market.**

¡La bella y la bestia! La combinación de dos woofers de 18" con bobina de 4,5" de larga excursión, en un recinto altamente reforzado, con amplificación de 3000 W, DSP y un diseño ergonómico, hace del X218W3K uno de los más avanzados, poderosos y fácilmente manejables subwoofers del mercado.

# X218W3K

3000 W  
2x 18" ACTIVE  
SUBWOOFER

*Xcellence*



CARDIOID  
PRESET



> 250 V  
Overvoltage  
Protection



WITH CWK-D



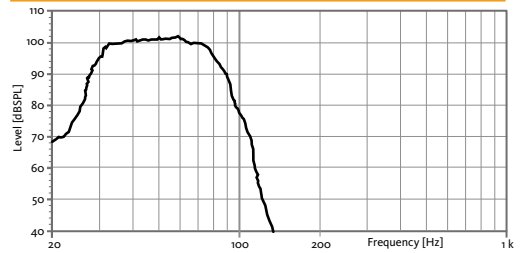
DSP STUDIO CONTROL APP  
FOR IPAD & WINDOWS

**TECHNICAL FEATURES**

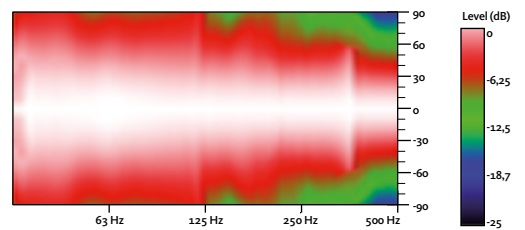
Amplifier (program power)	3000 W – Class D
Input sensitivity	2 dBu – 1 V
Input Impedance	20 kΩ Balanced
Mains	Universal Switch Mode Power Supply 85-265 V / 45-65 Hz
Average current draw	4.2 A (Heavy duty musical program)
SPL (1 m)	138 dB continuous, 141 dB peak
Built-in DSP	48 bit
AD/DA converters	24 bit – 96 kHz
Presets	LPF80 / LPF80+3 / LPF90 / LPF90+3 / LPF110 / LPF110+3 / CARDIOID + 23 configurable user memories
Frequency response (-10 dB)	28 Hz – 120 Hz
Components LF	2x18" Neodymium woofers (4.5" voice coil)
Directivity (HxV)*	Omnidirectional
Weight	104.5 kg
Finish	Multilayer Baltic birch plywood Front steel grille with grey micro-foam cloth High resistant black matt Polyurea paint

\* Cardioid preset available (3 units minimum)

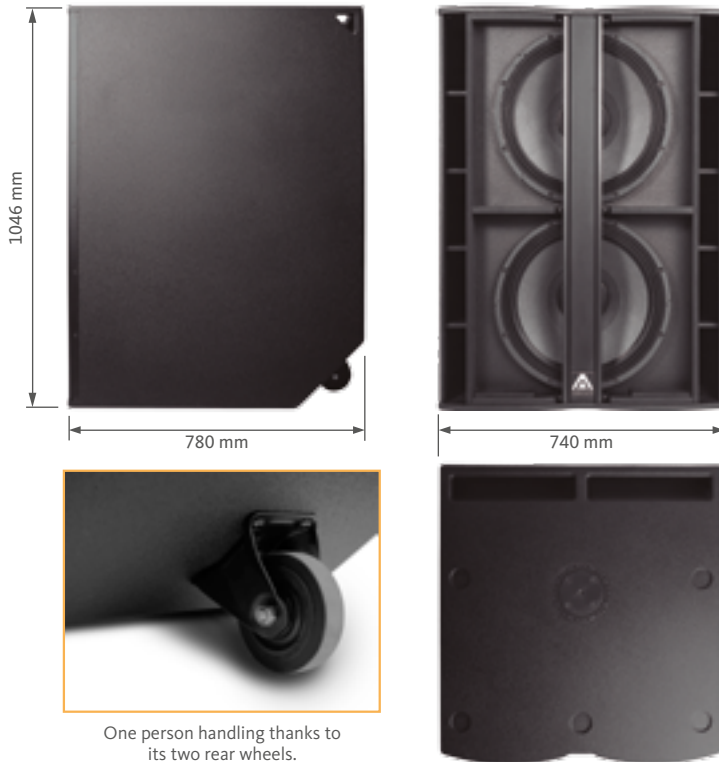
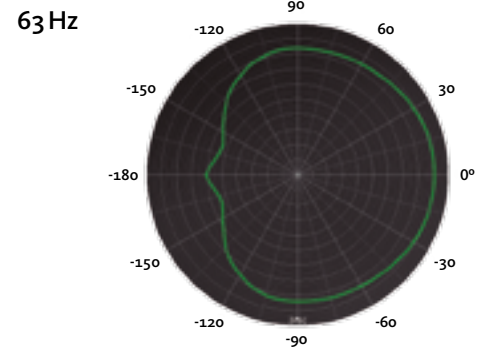
**FREQUENCY RESPONSE 1w/1m (LPF90+3 PRESET)**



**HORIZONTAL & VERTICAL COVERAGE, 0°**



**EASY CARDIOID CONFIGURATION THROUGH DEDICATED PRESET**



One person handling thanks to its two rear wheels.



REAR VIEW

**ACCESSORIES**



NC-X218W



FR-X208



FR-X218



CWK-D

---

*Perfection requires talent, technology and passion...*

Our line array systems would be nothing if we hadn't applied ourselves to exhaustive research in acoustic and electronic design. Master Audio's R&D department is constantly searching for the latest technologies, rethinking every detail and striving for the perfect design, incorporating the very best components and materials. This is what you can expect to find in Xcellence series line array systems – and they will satisfy even the most demanding audiophiles.

The X208 and X210 advanced line array sound systems are the jewels in the crown of our Xcellence series. Ideal for both touring or fixed installations, we believe there is no better option available.

*It's quite simple: Xcellence line arrays will make your events sound awesome.*

---

# LINE ARRAY SYSTEMS

---

*La perfección requiere talento, tecnología y pasión ...*

Nuestros sistemas line array no serían nada si no hubiésemos aplicado una exhaustiva investigación en diseño acústico y electrónico.

El departamento de I+D de Master Audio, en constante búsqueda de las últimas tecnologías, lucha por encontrar el diseño perfecto incorporando los mejores componentes y materiales. Esto es lo que puedes esperar de los sistemas Xcellence Line Array, satisfacción para los melómanos más exigentes.

Los sistemas de sonido line array X208 y X210 son el estandarte vde nuestra serie Xcellence. Ideales tanto para giras o instalaciones fijas. Creemos firmemente que no hay mejor opción disponible.

*Es muy sencillo: los sistemas Xcellence Line Array harán que tus eventos suenen increíbles.*

---







# X208

Style and performance come together in the X208. Exclusive, customised waveguide projects sound with consistency at great distance, allowing you to handle nearly any application. Master Audio technology in X208 delivers ease of use a unique sound quality in a compact size. Innovation that you can hear!

Estilo y rendimiento se unen en el X208. La exclusiva y personalizada guía de ondas proyecta el sonido con una gran consistencia a larga distancia, lo que permite usarlo en cualquier aplicación. La tecnología de Master Audio proporciona un uso fácil con una calidad de sonido única en un tamaño compacto. ¡Innovación que se puede oír!

# X208

## 2x 8" LINE ARRAY SYSTEM

*Xcellence*



Exclusive high performance waveguide



> 250 V Overvoltage Protection



WITH CWK-D

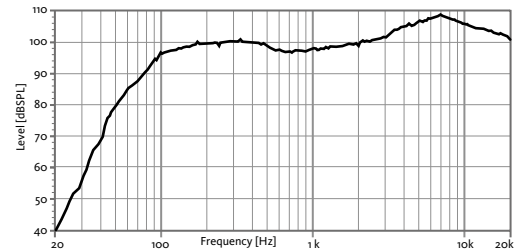


DSP STUDIO CONTROL APP FOR IPAD & WINDOWS

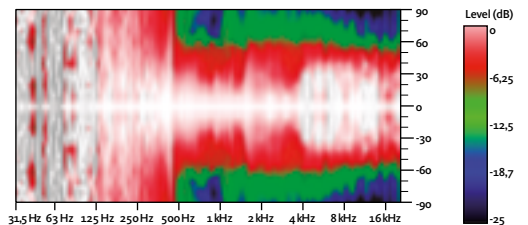
### TECHNICAL FEATURES

Amplifier (program power)	2400 W (LF) + 600 W (HF) – Class D Bi-amplified
Input sensitivity	8 dBu – 1.94 V
Input Impedance	20 kΩ Balanced
Mains	Universal Switch Mode Power Supply 85-265 V / 45-65 Hz
Average current draw	3.8 A (Heavy duty musical program)
SPL (1 m)	130 dB continuous, 133 dB peak
Built-in DSP	48 bit
AD/DA converters	24 bit – 96 kHz
Presets	4FLAT_FR / 4FLAT_SW / 4ARC_FR / 4ARC_SW / 4ARC+_FR / 4ARC+_SW / 8FLAT_FR / 8FLAT_SW / 8ARC_FR / 8ARC_SW / 8ARC+_FR / 8ARC+_SW / 2ARC_FR / 2ARC_SW / 2ARC+_FR / 2ARC+_SW + 23 configurable user memories
Frequency response (-10 dB)	78 Hz – 18 kHz
Components LF – MF HF	2 x 8" Neodymium woofers (2.5" voice coil) 2 x 1.7" PEN diaphragm Neodymium drivers
Directivity (HxV)	110° x 11°
Weight	25 kg (X208A) 22 kg (X208P)
Finish	Multilayer Baltic birch plywood Front steel grille with grey micro-foam cloth High resistant black matt Polyurea paint

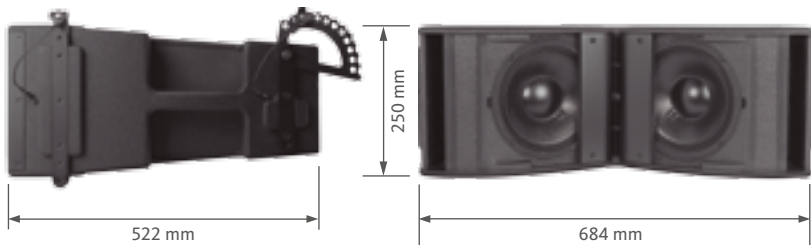
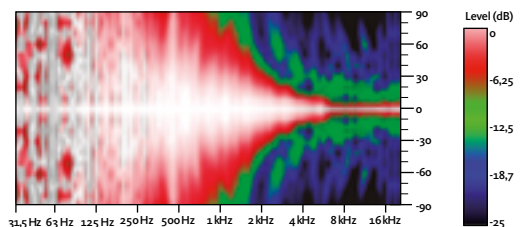
### FREQUENCY RESPONSE 1w/1m (4FLAT\_FR PRESET) (ONE CABINET)



### HORIZONTAL COVERAGE, 0°

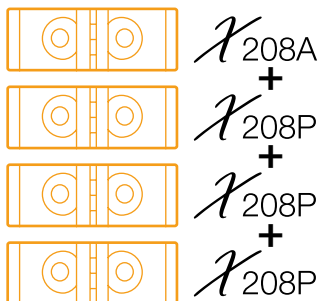


### VERTICAL COVERAGE, 0°



### X208 SET

1x X208A (active)  
3x X208P (passive)



REAR VIEW

X208 SET (1x X208A + 3x X208P)

### ACCESSORIES



FC-X208



TA-X208R



FR-X18



FR-X208



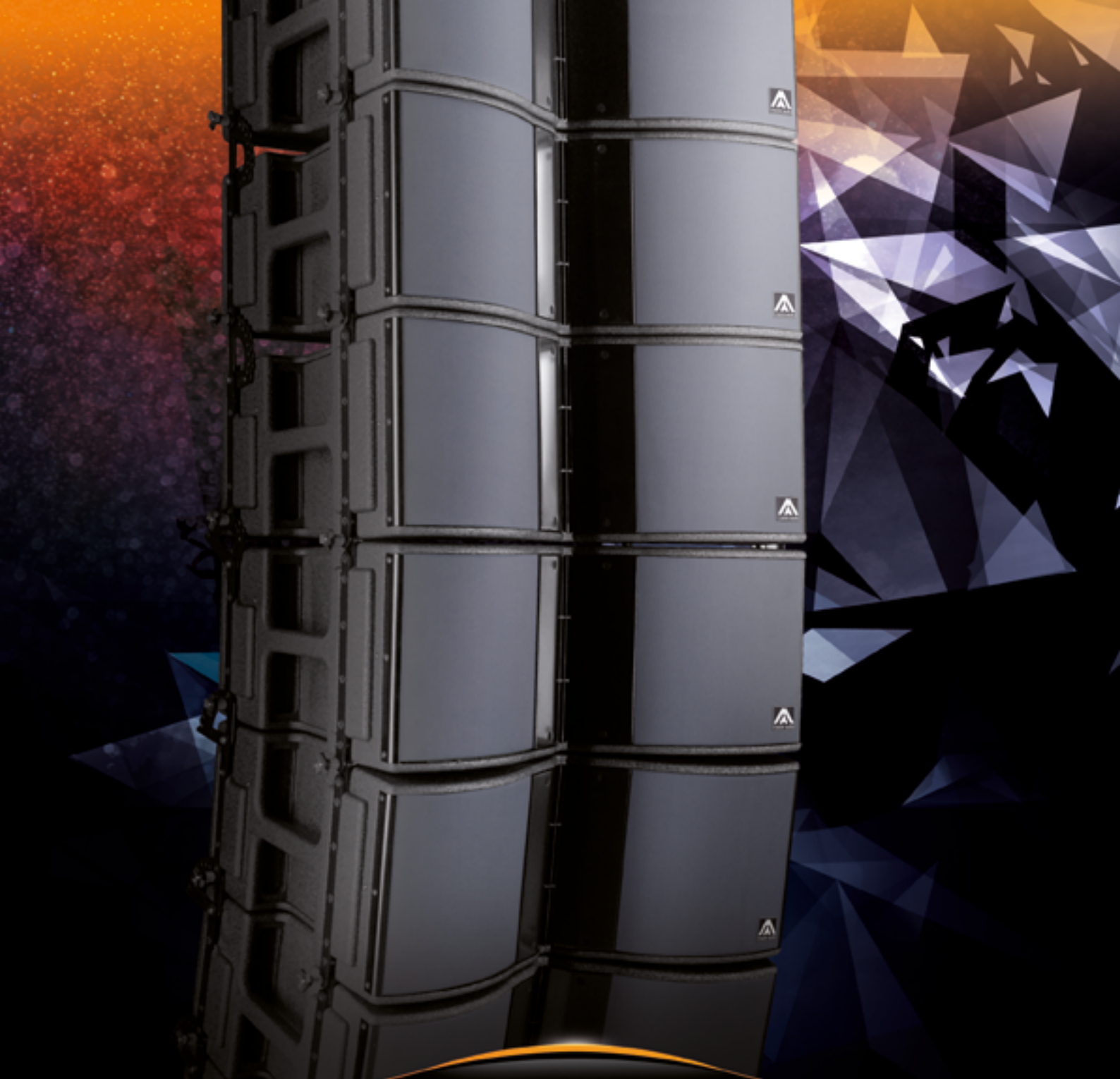
FA-X208/210



FA-X208/215



CWK-D



# X210

**There is no way to make the X210 any better. Breakthrough technologies, cutting-edge acoustic design, the highest quality, precision-engineered, customised components and materials – X210 is the flagship of the Xcellence series and the epitome of audio perfection. What are you waiting for?...**

No hay forma de hacer el X210 mejor. Tecnología innovadora, diseño acústico de vanguardia, alta calidad, ingeniería de precisión, componentes y materiales personalizados...  
El X210 es el buque insignia de la serie Xcellence y el epítome de la perfección en audio. ¿A qué estás esperando?...

# X210

## 2x10" LINE ARRAY SYSTEM

*Xcellence*



Exclusive high performance waveguide



> 250 V Overvoltage Protection



WITH CWK-D

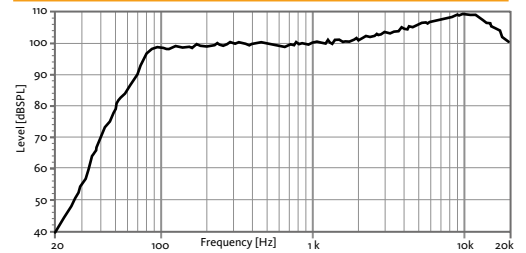


DSP STUDIO CONTROL APP FOR IPAD & WINDOWS

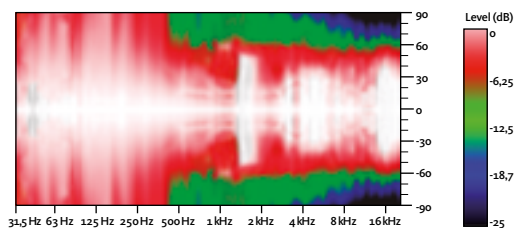
### TECHNICAL FEATURES

Amplifier (program power)	2400 W (LF) + 600 W (HF) – Class D Bi-amplified
Input sensitivity	8 dBu – 1.94 V
Input Impedance	20 kΩ Balanced
Mains	Universal Switch Mode Power Supply 85-265 V / 45-65 Hz
Average current draw	3.8 A (Heavy duty musical program)
SPL (1 m)	134 dB continuous, 137 dB peak
Built-in DSP	48 bit
AD/DA converters	24 bit – 96 kHz
Presets	LFXTEND / COMPACT / NEARFLD / LONGTHRW / STACK2 + 23 configurable user memories
Frequency response (-10 dB)	70 Hz – 18 kHz
Components LF – MF HF	2 x 10" Neodymium woofers (2.5" voice coil) 3 x 1.7" PEN diaphragm Neodymium drivers
Directivity (HxV)	120° x 7°
Weight	37 kg (X210A) 33 kg (X210P)
Finish	Multilayer Baltic birch plywood Front steel grille with grey micro-foam cloth High resistant black matt Polyurea paint

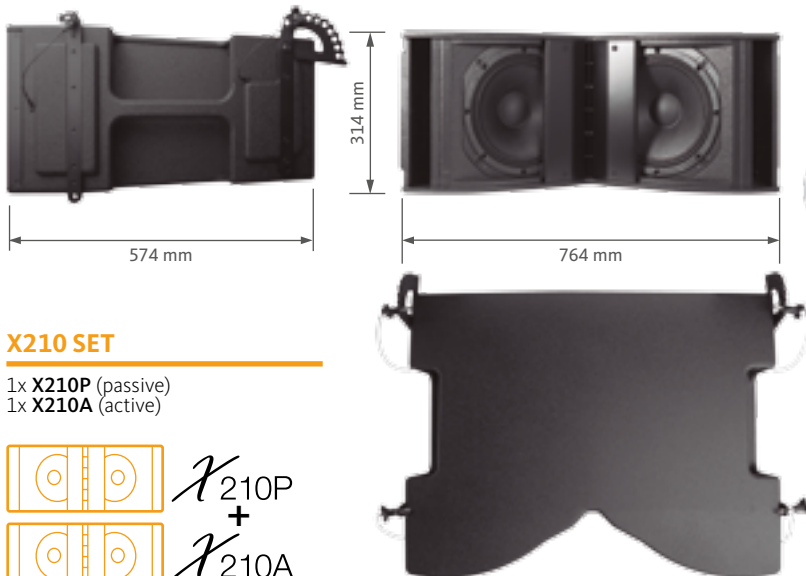
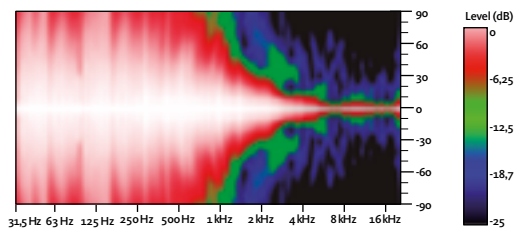
### FREQUENCY RESPONSE 1w/1m (LFXTEND PRESET) (ONE CABINET)



### HORIZONTAL COVERAGE, 0°



### VERTICAL COVERAGE, 0°



### X210 SET

1x X210P (passive)  
1x X210A (active)



REAR VIEW

X210 SET (1x X210P + 1x X210A)

### ACCESSORIES



FC-X210



TA-X210R



FR-X218



FA-X208/210



ST-X215



CWK-D

# DSP STUDIO CONTROL SOFTWARE



## ENJOYABLE FROM THE BEGINNING AGRADABLE DESDE EL PRINCIPIO

Straightforward, modern and user-friendly interface. Never before was so nice to setup a system.

Interfaz clara, sencilla y pensada para el usuario. Nunca antes fue tan agradable configurar un sistema.

Effortless auto-detection that let you add intuitively each cabinet into a layout before adjusting its position.

Auto detección sin esfuerzo que te permite añadir intuitivamente cada caja a la pantalla antes de ajustar su posición definitiva.

## FLEXIBILITY LIKE NEVER BEFORE FLEXIBILIDAD NUNCA ANTES VISTA

Bespoke control protocol that supports Wi-Fi connectivity (control over IP).

CWK-D wireless communication kit needed. Protocolo de control a medida compatible con conectividad Wi-Fi (control a través de IP). Es necesario el Kit de comunicación inalámbrica CWK-D.

## INTUITIVE ORGANIZATION ORGANIZACIÓN INTUITIVA

Organize and control several cabinets quickly and easily. Links for two or more identical cabinets, or as groups of varying models.

Controla varias cajas de forma rápida y sencilla. Links para dos o más cajas del mismo modelo, o en grupos si son de diferente modelo.

Optimized layout grid for any project size.

Retícula de posición optimizada para proyectos de cualquier tamaño.

Edit processor values easily from any spot in the venue.

Edita cualquier valor fácilmente desde cualquier lugar de la sala o instalación.

## GET FULL CONTROL CONTROL TOTAL

Comprehensive information about input and output levels, heat-sink temperature, clip and protection indicators.

Información completa y clara de los niveles de entrada y salida, temperatura del disipador de calor, clip y de los indicadores de protección.

Edit until the finest detail of parameters such as crossover frequency, gain, limiter, polarity, delay, five custom parametric EQs or an array of filter shapes.

Ajusta hasta el mínimo detalle parámetros como frecuencia crossover, ganancia, limitador, polaridad, delay, cinco ecualizadores paramétricos personalizados o una amplia gama de filtros.

*Excellence*

# "Instant access to outstanding sound"

1

Configure your  
wifi network

2

Detect  
loudspeakers

3

Setup audio  
settings

4

Enjoy the  
best sound



iPad  
VERSION



DSP Studio



Link setup



Equalizer setup



Audio settings controls



Loudspeaker information



PC  
VERSION



DSP Studio 2

Download it from our website:  
[www.master-audio.com](http://www.master-audio.com)



Auto detection



Link edition



Preset selection



Advanced parameters setup

# XCELLENCE CONFIGURATIONS

## STAGE MONITOR



X12CE / X15CE

## POINT SOURCE



X12CE / X15CE / X15LTE / X15LTP

## POLE MOUNT



X12CE + X18WE  
X15CE + X18WE  
X15LTE + X18WE

## STACKING



4x X208 + X18WE



2x X210 + X215W



2x X210 + X218W3K



4x X208 + X218W3K

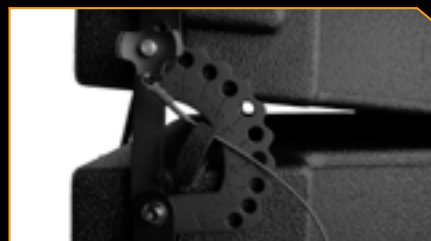
## A high-end range never before was so easy to install!

Every little aspect of Xcellence series has been designed for maximum user comfort, safety and ease of installation.

Shapes, details, finishes, stainless-steel resistant materials, all together allow Xcellence configurations make the most of every system.

## ¡Una gama alta nunca antes fue tan fácil de instalar!

Cada pequeño aspecto de la serie Xcellence ha sido pensado para la máxima comodidad y seguridad del usuario. Formas, detalles, acabados, materiales de acero inoxidable resistentes, permiten que las configuraciones Xcellence saquen el mayor provecho de cada sistema.





# Suitable in any application

## FLYING



8x X208



4x X208 + X215W



4x X208 + X18WE



2x X210 + 2x X208



X15LTE / X15LTP



8x X210



X12CE / X15CE

## WALL MOUNT



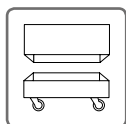
X12CE / X15CE

# ACCESSORIES

## ACCESORIOS

### FLIGHT CASE

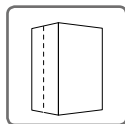
CAJA DE TRANSPORTE



- FC-X12CE** for 2 units X12CE
- FC-X15CE** for 2 units X15CE
- FC-X15LTE** for 2 units X15LTE - X15LTP
- FC-X18WE/1** for 1 unit X18WE
- FC-X18WE/2** for 2 units X18WE
- FC-X208** for 4 units X208
- FC-X210** for 4 units X210
- FC-X215** for 2 units X215W

### PROTECTIVE COVER

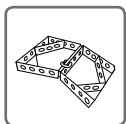
FUNDA PROTECTORA



**NC-X218W** for X218W3K

### TOURING BUMPER

ESTRUCTURA DE VOLADO

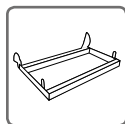


- TA-X208R** for X208 - X18WE
- TA-X210R** for X210 - X215W



### STACKING FRAME

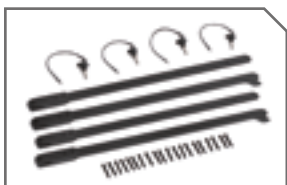
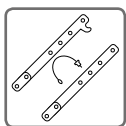
ESTRUCTURA DE STACKING



- FR-X18** for X208 - X18WE
- FR-X208** for X208 - X218W3K
- FR-X218** for X210 - X218W3K



**FLYING HARDWARE**  
HERRAJE DE VOLADO



**KR-18WE** for X18WE



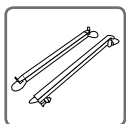
**STACKING KIT**  
KIT DE STACKING



**ST-X215** for X210 - X215W



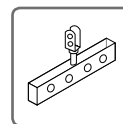
**FRAME ADAPTOR**  
SOPORTE DE COLGADO



**FA-X208/215** for X208 - X215W **FA-X208/210** for X208 - X210



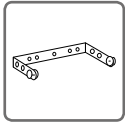
**FLYING BAR**  
PERFIL COLGADO



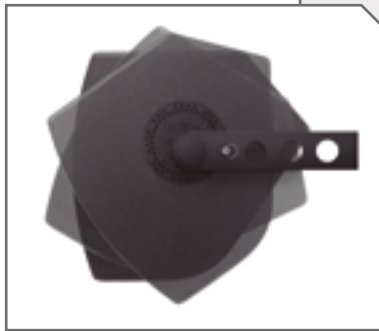
**HR-1215** for X15LTE - X15LTP



**“U” BRACKET**  
SOPORTE “U”



**UB-X12** for X12CE  
**UB-X15** for X15CE

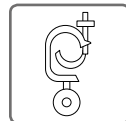


**HOOK FOR BRACKET**  
ABRAZADERA PARA SOPORTE



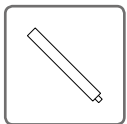
**GT-50** for UB-X12 - UB-X15

**HOOK FOR FLYING BAR**  
ABRAZADERA PARA PERFIL COLGADO



**GT-50HR** for HR-1215

**DISTANCE ROD M20 THREAD**  
BARRA SOPORTE CON ROSCA M20

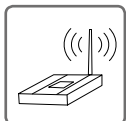


**d:** 35 mm  
**l:** 80 cm

**SP/CR** for X12CE  
for X15CE  
for X15LTE  
for X18WE



**WIRELESS COMMUNICATION KIT**  
**KIT DE COMUNICACIÓN WIRELESS**



**CWK-D** for all cabinets

- 1x D-LINK DWL-3200AP Wireless Access Point + support
- 1x Access Point power transformer
- 1x Access Point power cord
- 1x Ethernet cable, ECRJ45-1200 with housing shield both ends
- 2x Ethernet cable, ECRJ45-500 with housing shield both ends
- 1x Ethernet cable, RJ-45 with housing shield on one end, blue – 1 m (for Access Point)
- 1x Neutrik cable extension (RJ-45 feedthrough)
- 1x USB Pendrive – with DSP Studio software



**M10 RIGGING EYEBOLT**  
**ANILLA RIGGING DE M10**



**ACR-M10**

for X12CE  
 for X15CE  
 for X15LTE  
 for X15LTP

**SAFETY SLING**  
**ESLINGA DE SEGURIDAD**



**SC-15X** for X12CE - X15CE - X15LTE - X15LTP



Chamber of commerce  
 Innovation Award  
 winner in 2009



Energy efficiency

Due to the continuous research and development of our R&D, the product specifications are subject to change without prior notice.

Debido a la continua investigación y desarrollo de nuestro departamento de I+D, las especificaciones de los productos están sujetas a variación sin aviso previo.



# Recent

# Herence



Advanced sound systems since 1972

# *Excellence* 2014



Advanced sound systems since 1972

---

**Amate Electroacústica S.L.**

Pol.Ind. Norte - Perpinyà 25 - 08226 Terrassa (Barcelona-Spain)

T. +34 93 735 65 65 - F. +34 93 735 60 48 - info@master-audio.com

---

[www.master-audio.com](http://www.master-audio.com)